

**PVR / CD155 Antibody**  
**Rabbit Polyclonal Antibody**  
**Catalog # ALS16495****Specification**

---

**PVR / CD155 Antibody - Product Information**

Application	WB, IHC-P
Primary Accession	<a href="#">P15151</a>
Reactivity	Human
Host	Rabbit
Clonality	Polyclonal
Calculated MW	45kDa KDa
Dilution	WB~~1:1000 IHC-P~~N/A

**PVR / CD155 Antibody - Additional Information****Gene ID** 5817**Other Names**

Poliovirus receptor, Nectin-like protein 5, NECL-5, CD155, PVR, PVS

**Target/Specificity**

Human PVR / CD155

**Reconstitution & Storage**

Long term: -80°C; Short term: -20°C. Avoid freeze-thaw cycles.

**Precautions**

PVR / CD155 Antibody is for research use only and not for use in diagnostic or therapeutic procedures.

**PVR / CD155 Antibody - Protein Information****Name** PVR**Synonyms** PVS**Function**

Mediates NK cell adhesion and triggers NK cell effector functions. Binds two different NK cell receptors: CD96 and CD226. These interactions accumulate at the cell-cell contact site, leading to the formation of a mature immunological synapse between NK cell and target cell. This may trigger adhesion and secretion of lytic granules and IFN-gamma and activate cytotoxicity of activated NK cells. May also promote NK cell-target cell modular exchange, and PVR transfer to the NK cell. This transfer is more important in some tumor cells expressing a lot of PVR, and may trigger fratricide NK cell activation, providing tumors with a mechanism of immunoevasion. Plays a role in mediating tumor cell invasion and migration.

**Cellular Location**

[Isoform Alpha]: Cell membrane; Single-pass type I membrane protein [Isoform Beta]: Secreted.

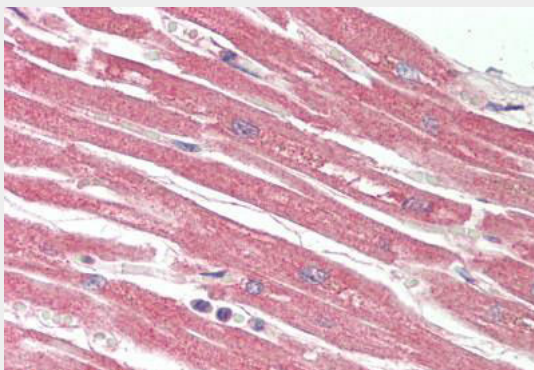
**Volume**

50 µl

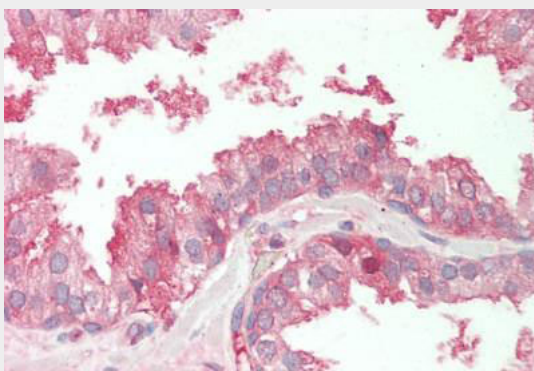
**PVR / CD155 Antibody - Protocols**

Provided below are standard protocols that you may find useful for product applications.

- [Western Blot](#)
- [Blocking Peptides](#)
- [Dot Blot](#)
- [Immunohistochemistry](#)
- [Immunofluorescence](#)
- [Immunoprecipitation](#)
- [Flow Cytometry](#)
- [Cell Culture](#)

**PVR / CD155 Antibody - Images**

Human Heart: Formalin-Fixed, Paraffin-Embedded (FFPE)



Human Prostate: Formalin-Fixed, Paraffin-Embedded (FFPE)

**PVR / CD155 Antibody - Background**

Mediates NK cell adhesion and triggers NK cell effector functions. Binds two different NK cell receptors: CD96 and CD226. These interactions accumulate at the cell-cell contact site, leading to the formation of a mature immunological synapse between NK cell and target cell. This may trigger adhesion and secretion of lytic granules and IFN-gamma and activate cytotoxicity of activated NK

cells. May also promote NK cell-target cell modular exchange, and PVR transfer to the NK cell. This transfer is more important in some tumor cells expressing a lot of PVR, and may trigger fratricide NK cell activation, providing tumors with a mechanism of immunoevasion. Plays a role in mediating tumor cell invasion and migration. Serves as a receptor for poliovirus attachment to target cells. May play a role in axonal transport of poliovirus, by targeting virion-PVR-containing endocytic vesicles to the microtubular network through interaction with DYNLT1. This interaction would drive the virus-containing vesicle to the axonal retrograde transport.